



ARMANI  
RESIDENCE

KUALA LUMPUR

THE ULTIMATE LIFESTYLE

# *Welcome*

The ideal positioning of Armani Residence Kuala Lumpur means that all manner of amenity is close at hand. From shopping and dining to entertainment and education, everything you need can be easily accessed, a feat made even more convenient thanks to the various facilities at your disposal.

# CONNECTIVITY AT YOUR DOORSTEP



TRX

KLCC

MERDEKA  
118

KL  
TOWER

QUILL CITY  
MALL

KAMPUNG  
BARU

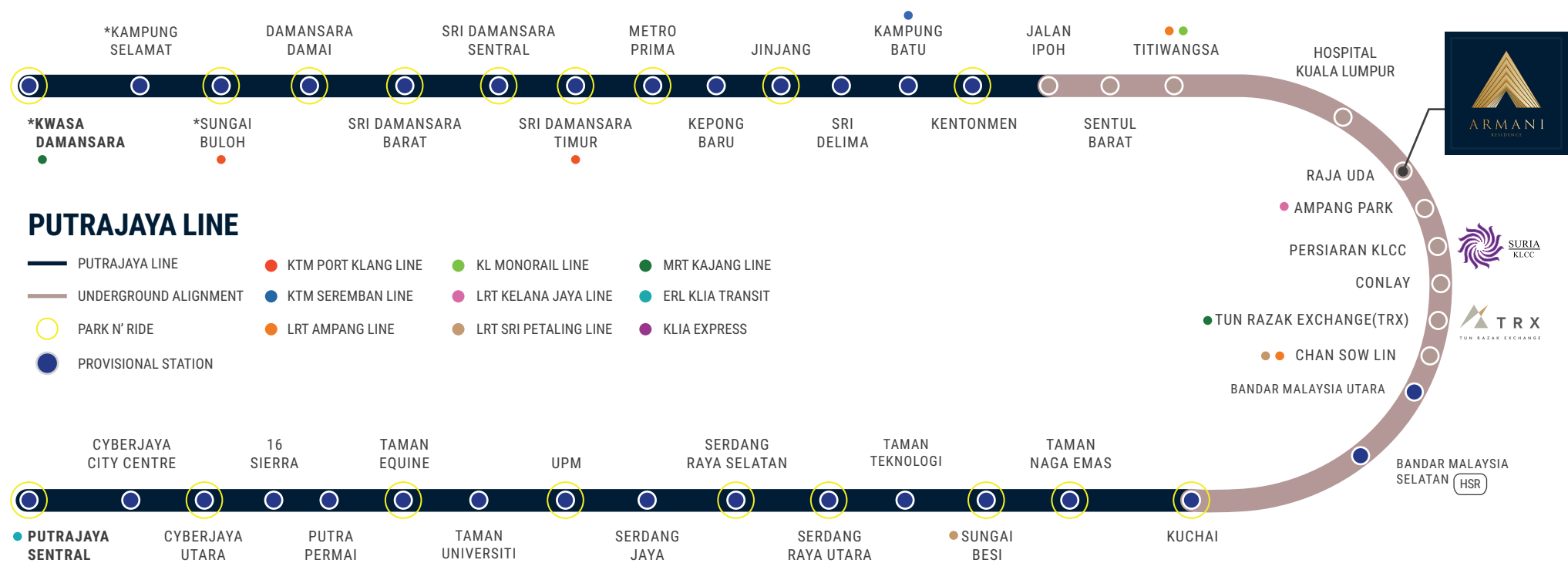


RAJA UDA  
MRT  
STATION

AKLEH



# TRANSIT ORIENTED DEVELOPMENT



# *Privileges of metropolitan living*

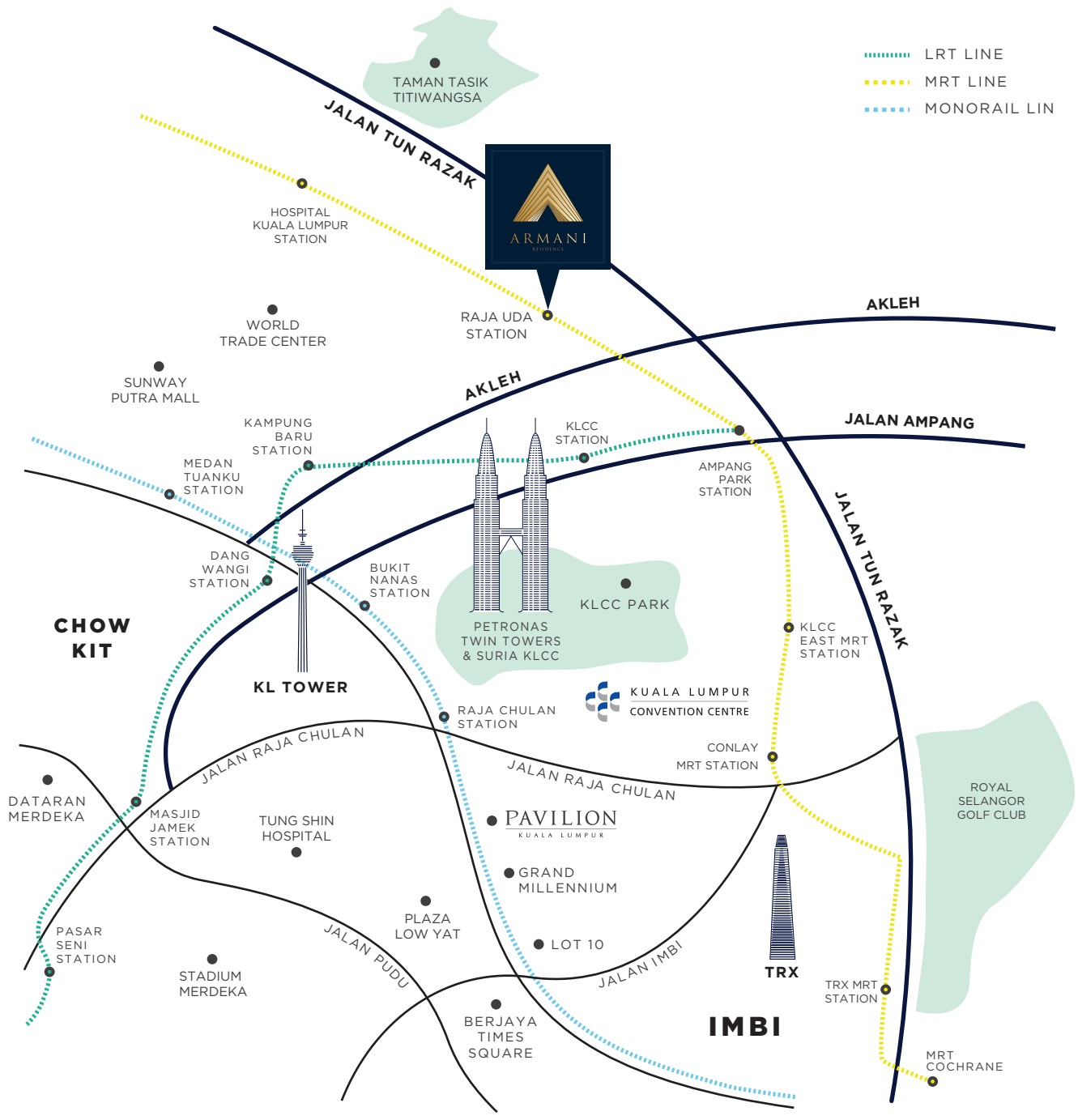
Located on the Raja Uda MRT station the most active train network, this distinctive address situates itself at the vibrant heart of Kuala Lumpur's metropolitan lifestyle.



*Amazing Location*

# SURROUNDED BY RICH AMENITIES

There's no location as desired as the Central Business District of Kuala Lumpur.



# ACCESSIBILITY WITHIN YOUR REACH



*Steps To*

MRT RAJA UDA  
STATION

---

*1 Stop*

AMPANG PARK STATION

---

*2 Stops*

PERSIARAN KLCC STATION

---

*3 Stops*

CONLAY STATION



## PLACES OF INTEREST

KLCC	2.2 km
KLCC LPT Station	2.4 km
Prince Court Medical Centre	3.4 km
Tun Razak Exchange MRT Station	3.6 km
KL Tower	3.9 km
Bukit Bintang	4.2 km

---

**13** SPECIALIST,  
PRIVATE &  
Within  
**3KM** GOVERNMENT  
HOSPITALS

---



## ENTERTAINMENTS

Suria KLCC	1.4 km
Avenue K	1.3 km
The Intermark	1.2 km
Sunway Putra Mall	2.1 km
Starhill Gallery	4.2 km
Fahrenheit 88	4.3 km
Pavilion KL	4.2 km



## HOTELS

Double Tree by Hilton	1.5 km
InterContinental	2.0 km
Renaissance	2.2 km
Equatorial	2.6 km
Mandarin Oriental	3.2 km
Sheraton Imperial	3.3 km
JW Marriott	4.0 km
Dorsett	4.1 km
The Ritz-Carlton	4.1 km

---

**60** EMBASSIES &  
Within  
**3KM** KL HIGH  
COMMISSION

---



## FINANCIAL INSTITUTES

Maybank	200 m
Bank Islam Semarak	500 m
CIMB Bank	600 m
Bank of China	1.4 km
RHB Bank	2.2 km
Affin Bank KLCC	2.5 km
Menara Public Bank	2.6 km
Public Bank	3.1 km
Al Rajhi Banking & Investment Corporation (Malaysia) Berhad	3.2 km
Menara Ambank	3.3 km

# *Redefining* Urban Living

Armani Residence Kuala Lumpur is positioned at the heart of a wide network of business opportunities, major roads as well as being close to the iconic KLCC and more. It's truly a place where all that is accessible comes within reach.

**Type Of Development:** Serviced Apartments

**Land Tenure:** Freehold



450 Total Units



9 Types of Units



41 Storey



9 Levels Carpark





# ARMANI RESIDENCE KL

*Guard House Entrance*

# Reception



The spacious double-height lobby lounge is the gateway to a lifestyle like no other. A perfect prelude to the unique suite of facilities and elegant residences that lie above it and home to a 24-hour security service.





*Sky Pool*



*Sky Gym*

*Keyplans*

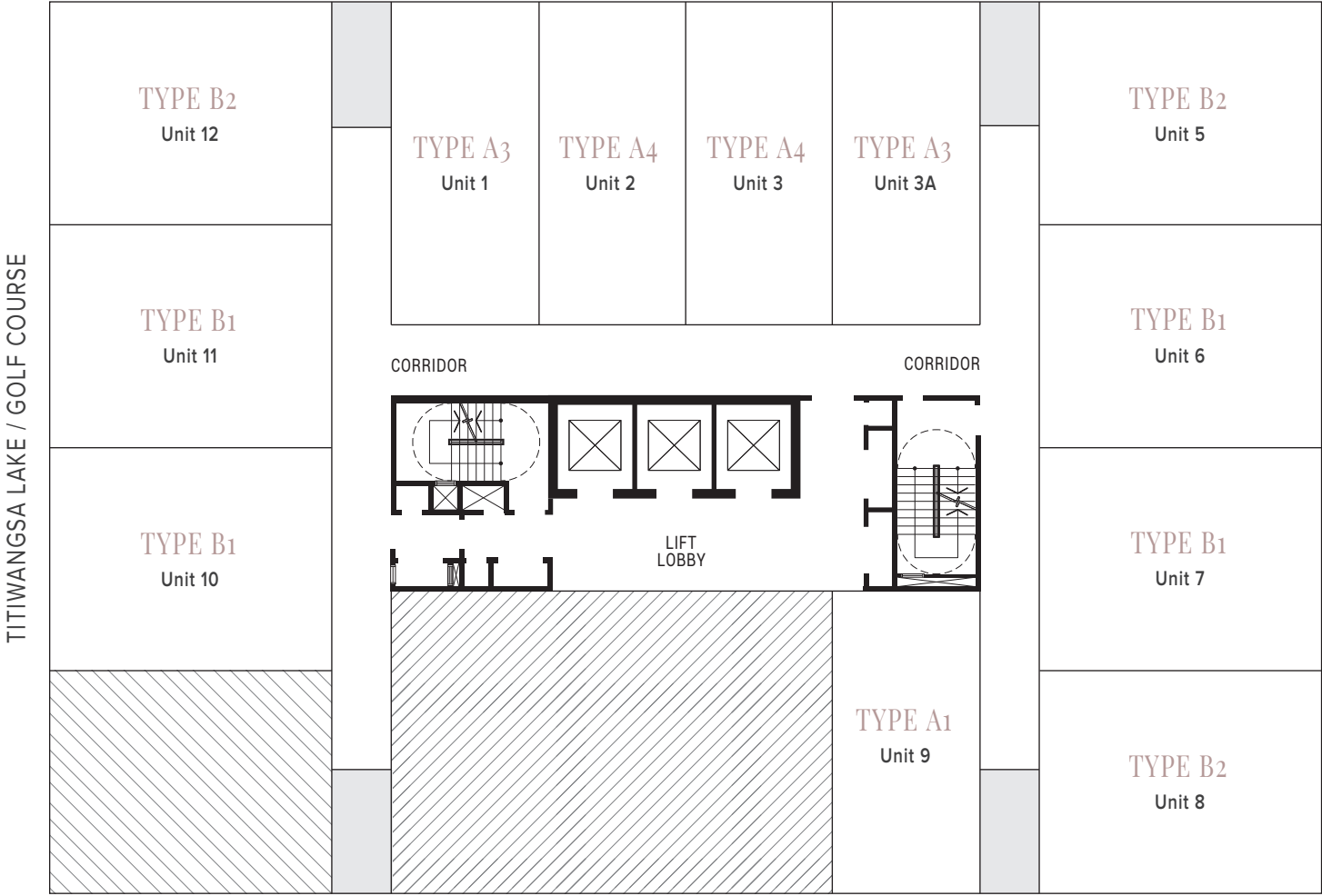
*Level*  
*10-18 | 20-37*

AMPANG



*Level  
19*

AMPANG



TITIWANGSA LAKE / GOLF COURSE

KLCC / KL TOWER

MONT KIARA

*Level*  
*38*

AMPANG



# *Facility Plans*

# LEVEL 39

- 1 Swimming Pool
- 2 Wading Pool
- 3 Pool Deck
- 4 Viewing Deck
- 5 Sitting Area
- 6 Shower
- 7 Multipurpose Hall
- 8 Gymnasium
- 9 Sauna
- 10 Changing Room



LEVEL  
**40**

- 11 Gymnasium
- 12 Management Office
- 13 Male & Female Surau
- 14 Multipurpose Hall



# *Floor Plans*

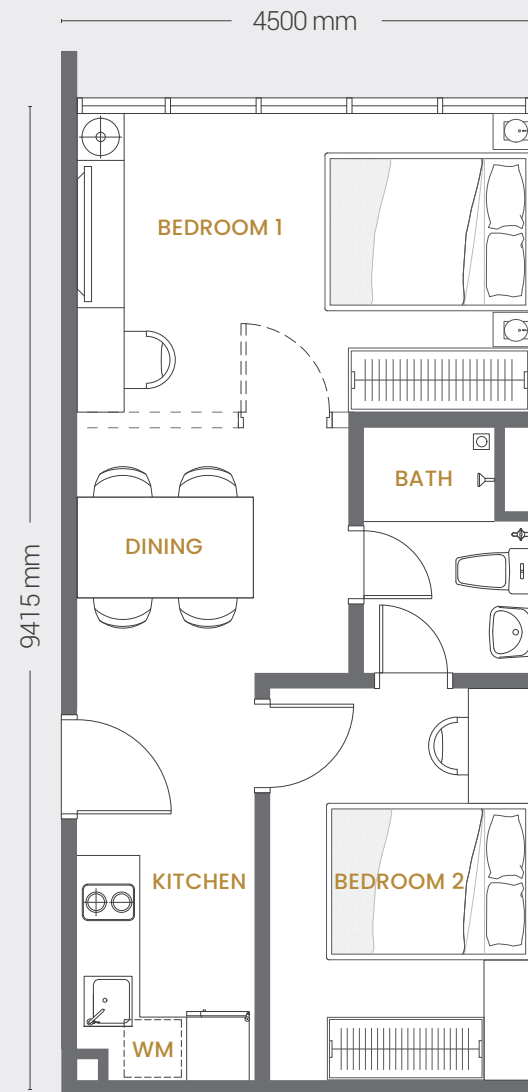
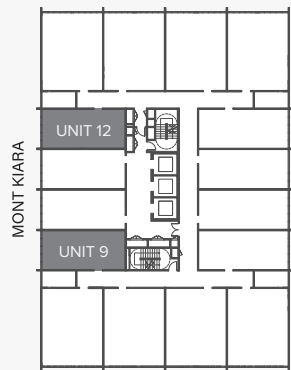
TYPE  
**A1**

**Specifications**

Total Area 42.36 m<sup>2</sup> / 456 ft<sup>2</sup>

Width 4500 mm

Length 9415 mm



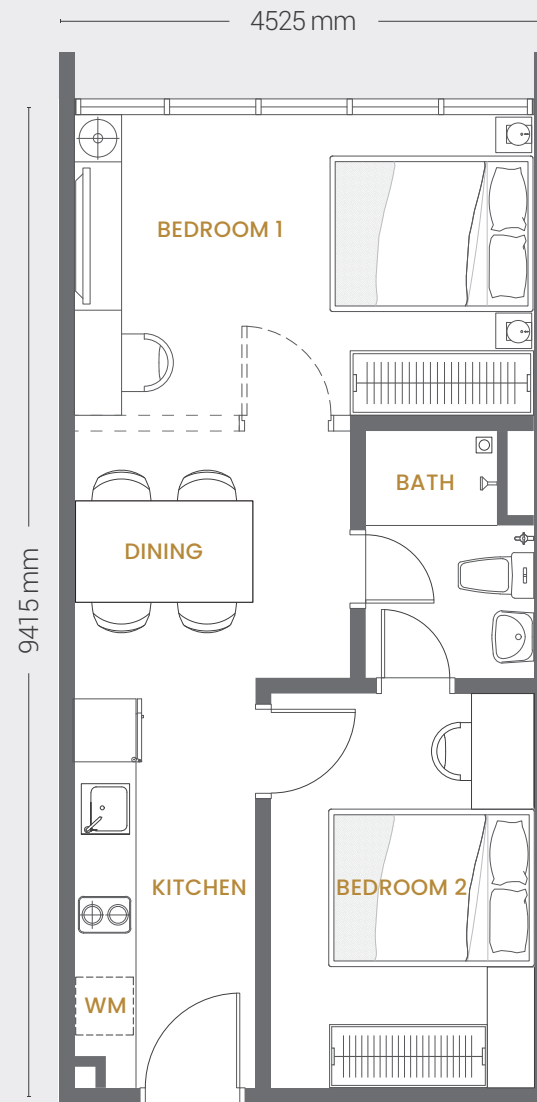
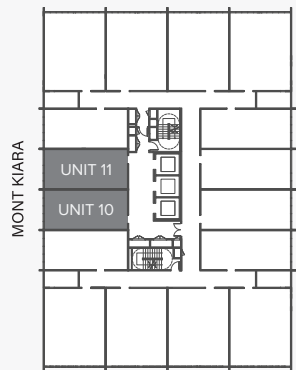
# TYPE A2

## Specifications

Total Area 42.59 m<sup>2</sup> / 458 ft<sup>2</sup>

Width 4525 mm

Length 9415 mm



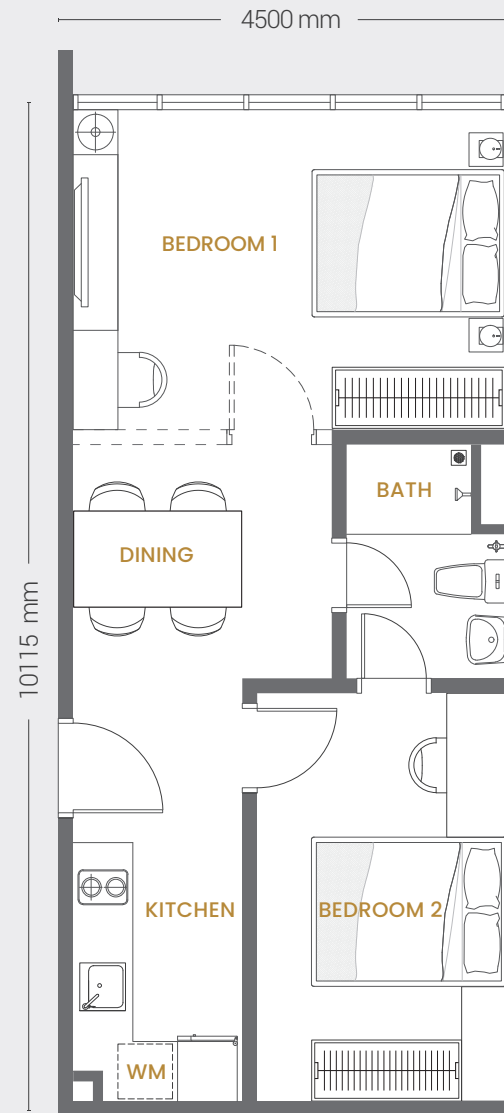
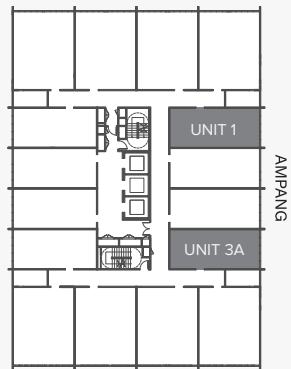
# TYPE A3

## Specifications

Total Area 45.51 m<sup>2</sup> / 490 ft<sup>2</sup>

Width 4500 m

Length 10115 mm



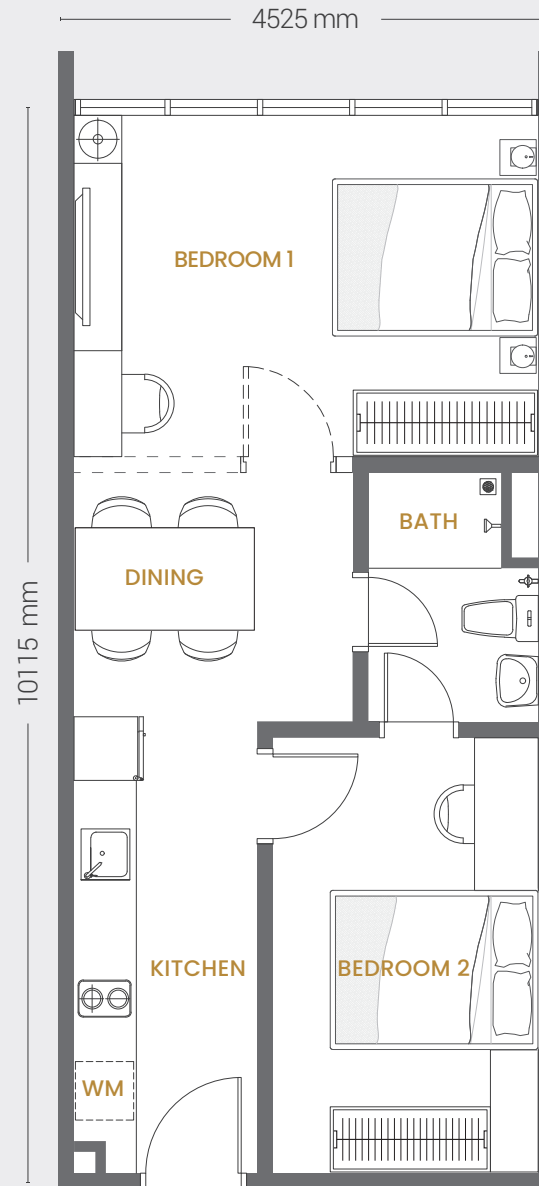
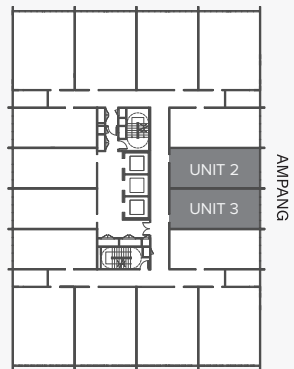
TYPE  
**A4**

**Specifications**

Total Area 45.78 m<sup>2</sup> / 493 ft<sup>2</sup>

Width 4525 mm

Length 10115 mm



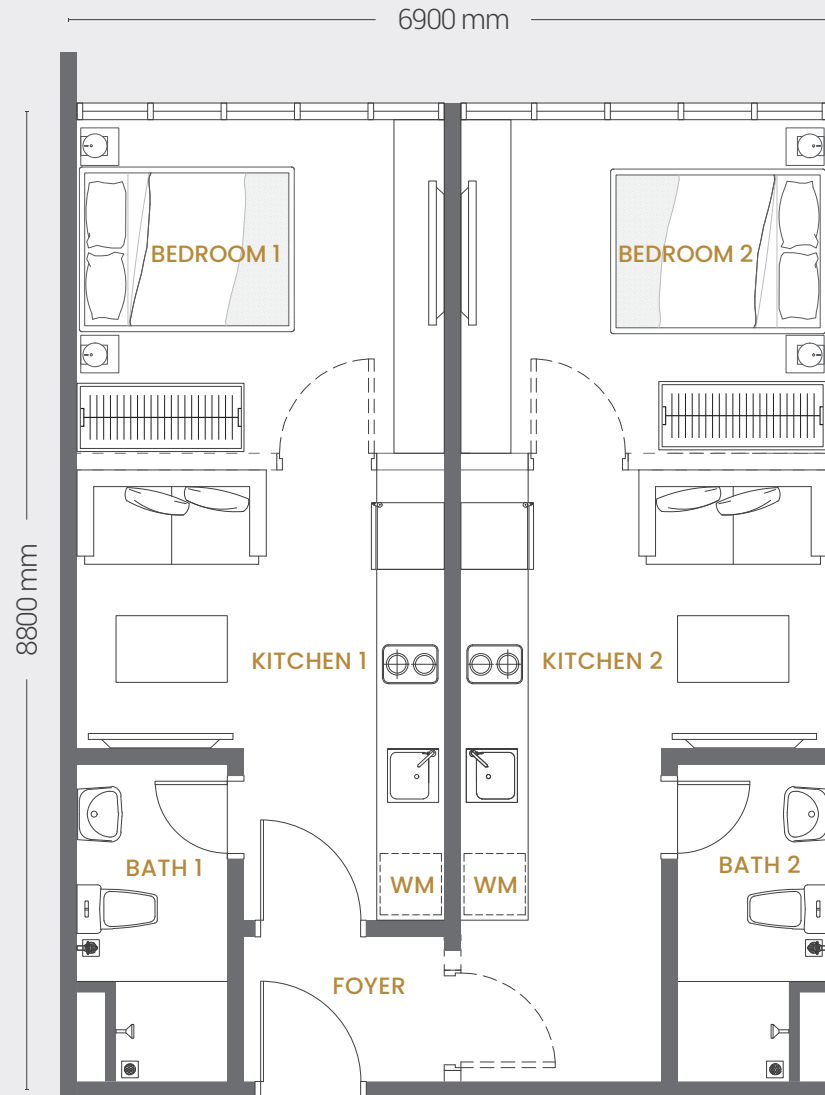
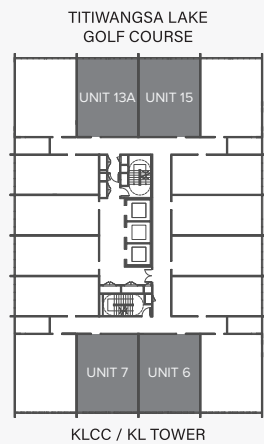
# TYPE B1

## Specifications

Total Area 60.72 m<sup>2</sup> / 654 ft<sup>2</sup>

Width 6900 mm

Length 8800 mm



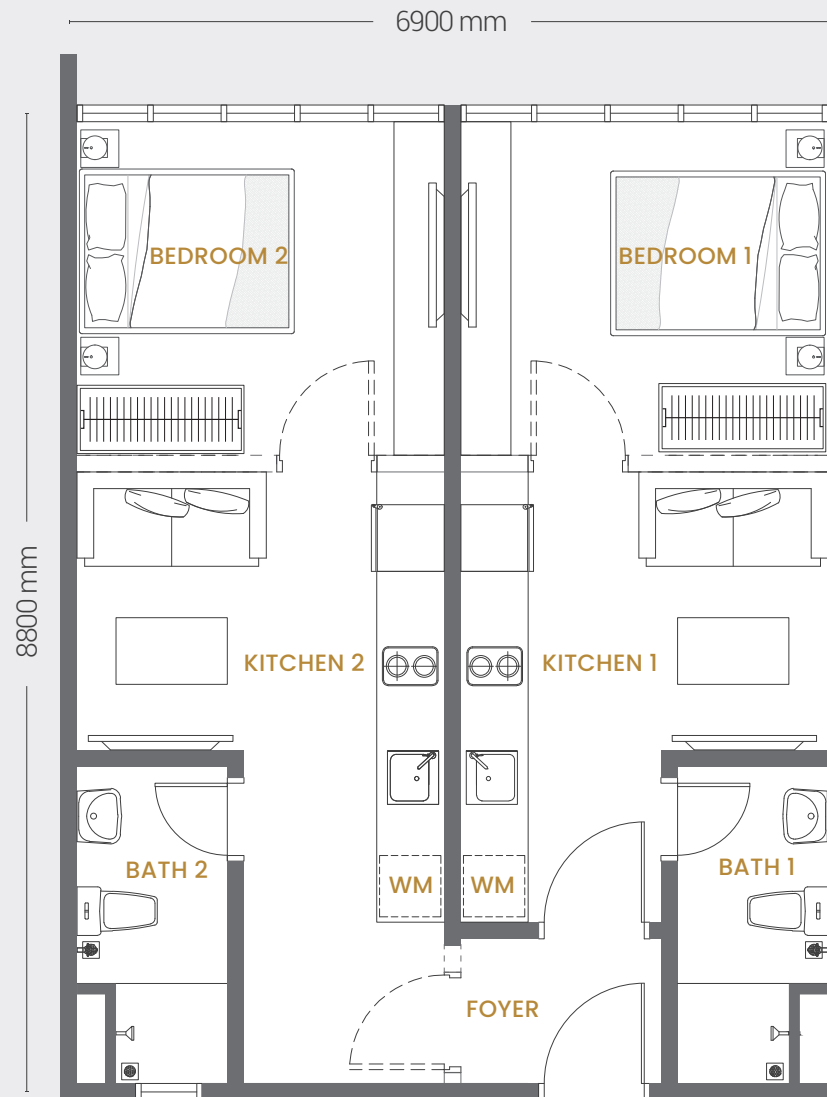
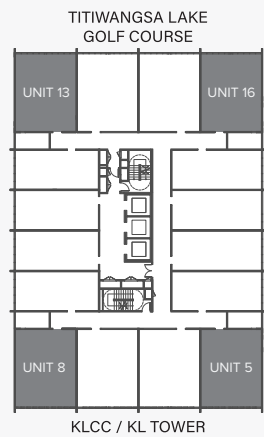
# TYPE B2

## Specifications

Total Area 60.72 m<sup>2</sup> / 654 ft<sup>2</sup>

Width 6900 mm

Length 8800 mm



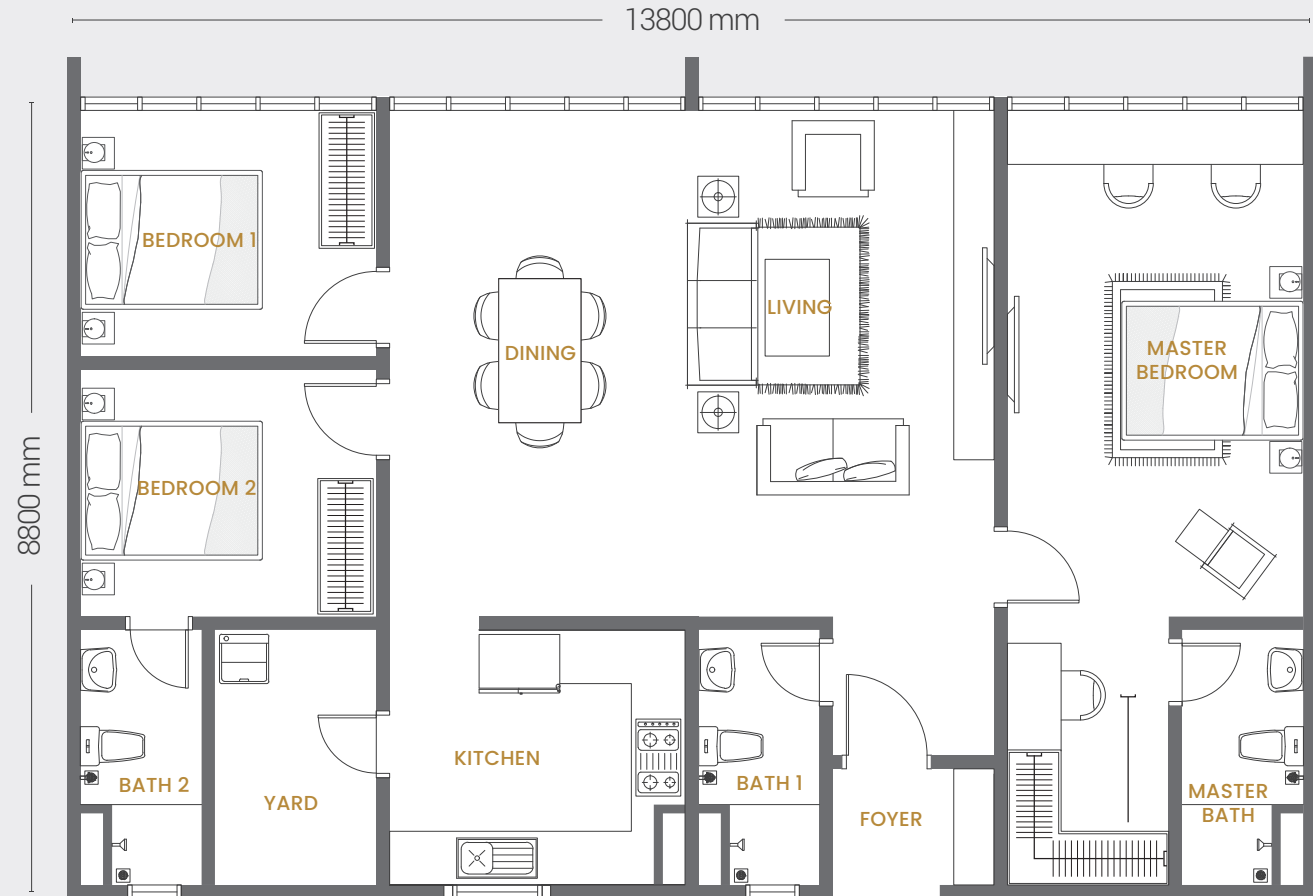
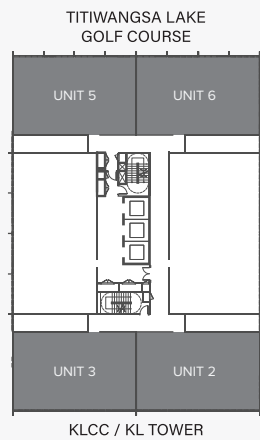
# TYPE C1

## Specifications

Total Area 121.44 m<sup>2</sup> / 1,308 ft<sup>2</sup>

Width 13800 mm

Length 8800 mm



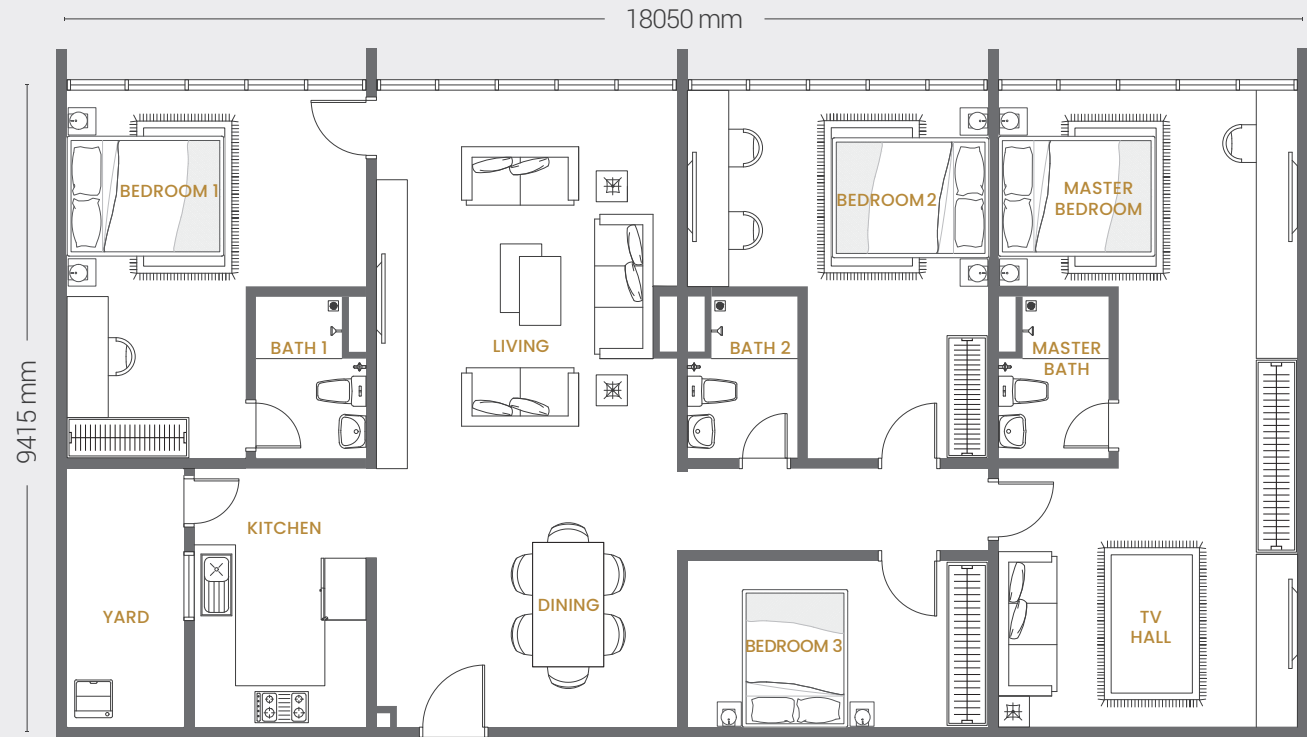
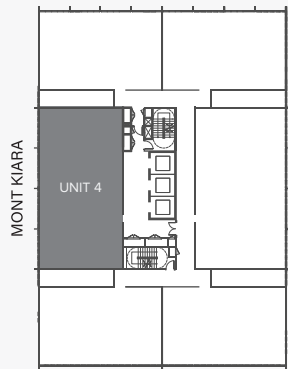
# TYPE C2

## Specifications

Total Area 169.90 m<sup>2</sup> / 1,828 ft<sup>2</sup>

Width 18050 mm

Length 9415 mm



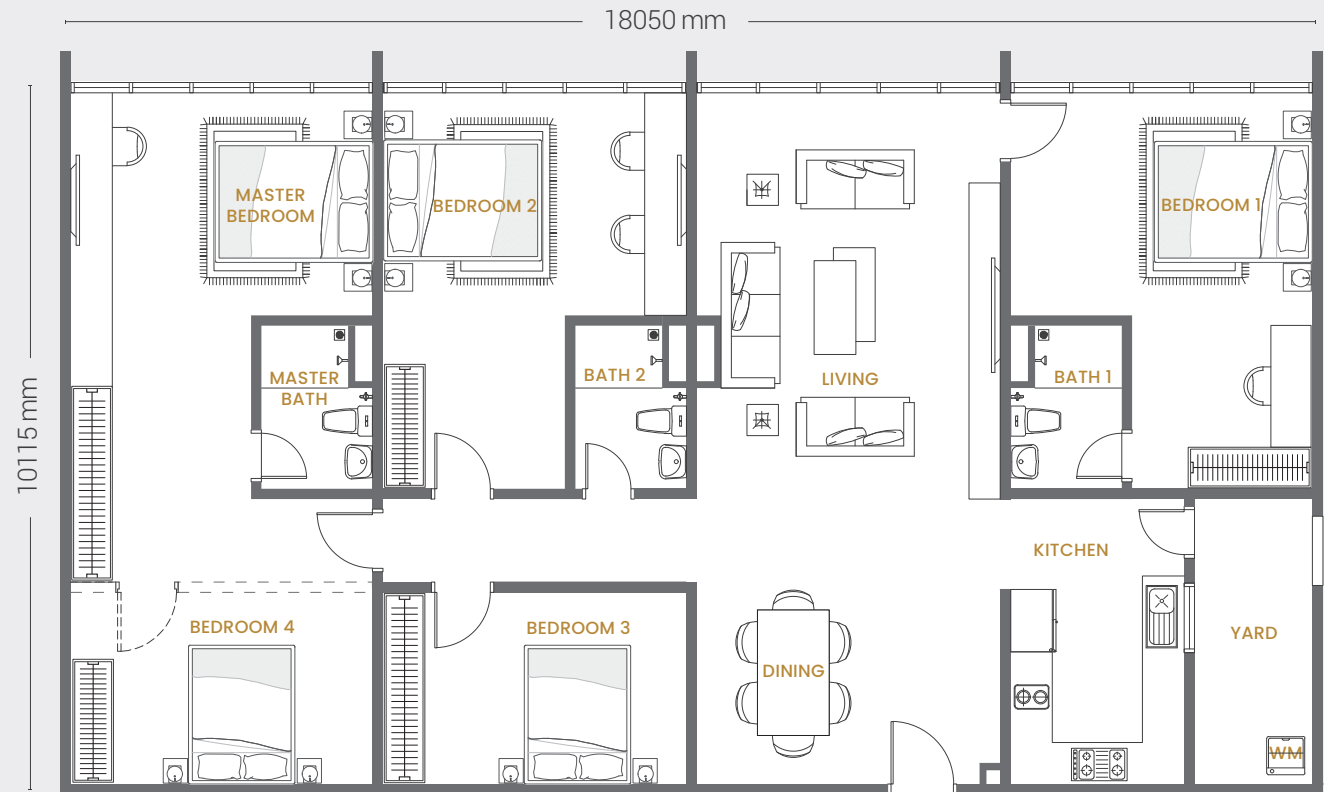
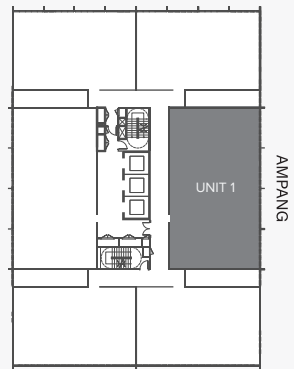
# TYPE C3

## Specifications

Total Area 182.58 m<sup>2</sup> / 1,965 ft<sup>2</sup>

Width 18050 mm

Length 10115 mm



## *Disclaimer*

The information contained herein is subject to change and cannot form part of an offer or contract. All pictures, sketches and illustrations here are artists' impressions only and are not intended to be representations of fact. Whilst every reasonable care has been taken in providing this information, the developer shall not be held responsible for any inaccuracies and changes as may be required by the authorities. Prospective purchasers are advised to read the terms and conditions of the Sales and Purchase Agreement carefully with regards to the common facilities services and the design layout plans before signing the Sales and Purchase Agreement.



---

**ARMANI RESIDENCE KL SALES GALLERY**

Lot 52, Jln Tun Razak , Kampung Baru, 50400 Kuala Lumpur.

**ARMANI DEVELOPMENT SDN. BHD (1347393-K)**

No. 29A, Jalan BRP 6/12, Bukit Rahman Putra, 40160 Sungai Buloh, Selangor

**+603 6142 2663**

**ARMANI**

DEVELOPMENT SDN. BHD.

( 1347393-K )